

NATIONAL  
FOOTBALL  
MUSEUM

# STRIP!

HOW FOOTBALL GOT SHIRTY

CONTENTS:  
EXHIBITION ACTIVITIES, DRAWING,  
ORIGAMI. 90% FUN, 10% POLYESTER



## QUESTION!

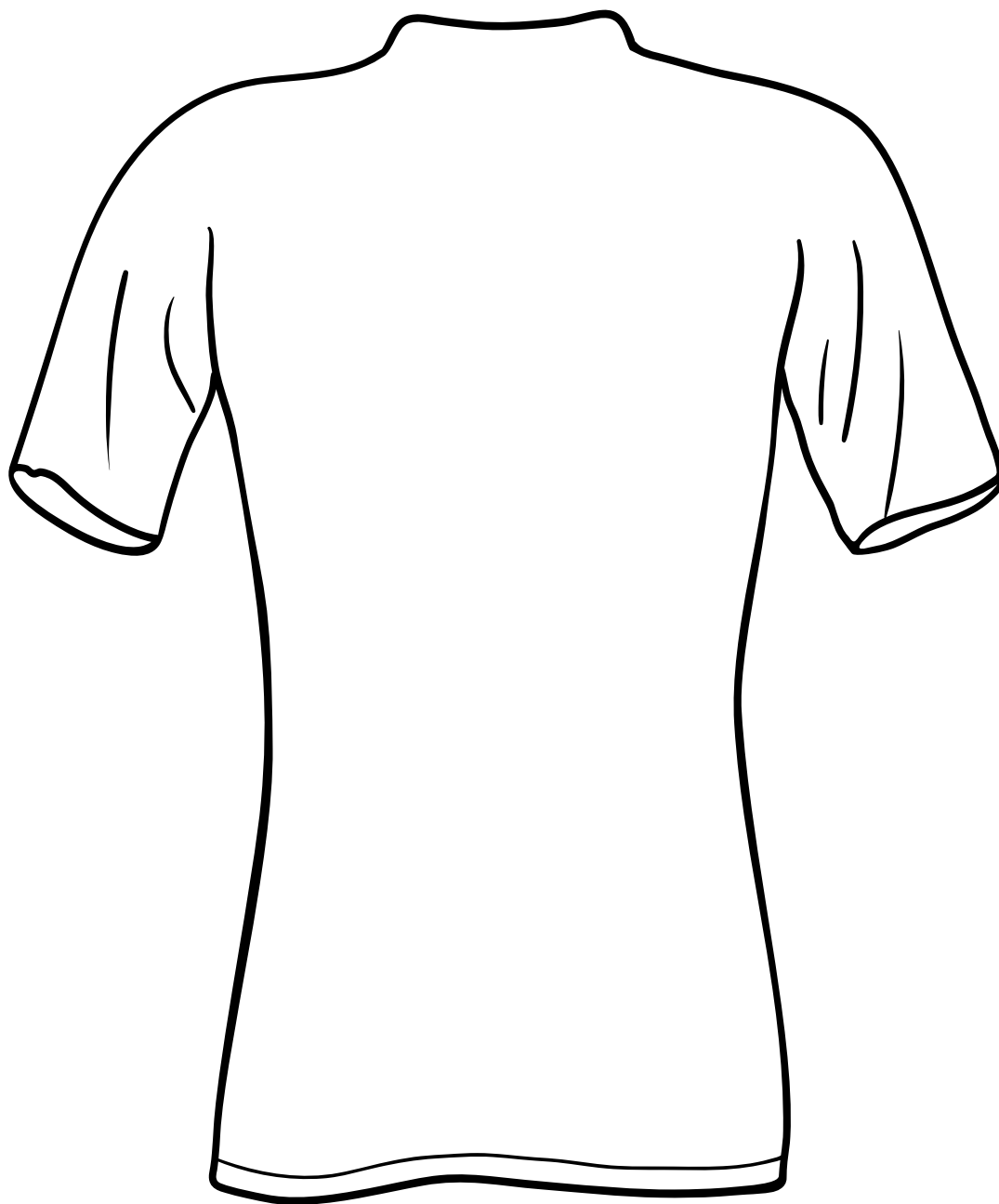
**THE GREATEST FOOTBALL  
SHIRT OF ALL TIME IS?**

A large, empty rectangular box with a thick pink border, intended for drawing a picture of the greatest football shirt of all time.

Draw a picture of it on the next page

# **DRAW YOUR GREATEST STRIP!**

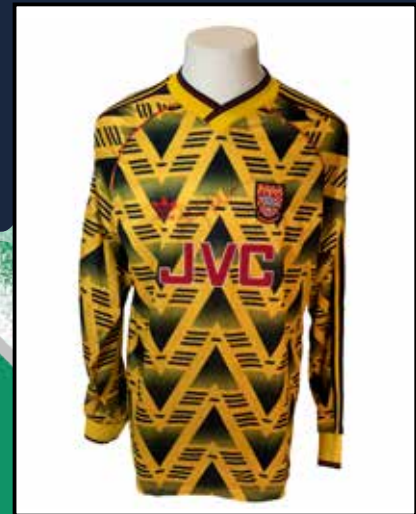
Choose one of your favourite kits from the past or create one from scratch. Like the designers of the 'eye-popping bangers' of the 1990s, the only limit is your imagination!



# REPLICA KIT BOOM!

Until the 1970s, football shirts were worn only on the pitch. Now we see them everywhere! No longer just for the players, people wear their replica shirts in parks, playgrounds and shopping centres.

How many kits do you recognise? Write the name of the club or international team under the pictures.



# SPOT THE DIFFERENCE!

This Chelsea third kit from the 2010/11 season is a bit of an eyesore, so we have tried to improve it!  
Can you spot the seven changes we have made?



## DID YOU KNOW?

Football is a truly global game, and this shirt is a great example of that. It was worn by a player from the Ivory Coast (Didier Drogba), playing for an English team (Chelsea) in a match against a French team (Marseille), was made by a German company (adidas) and sponsored by a South Korean company (Samsung)!

# WORD SEARCH!

Can you find all the terms in our football kit themed word search?

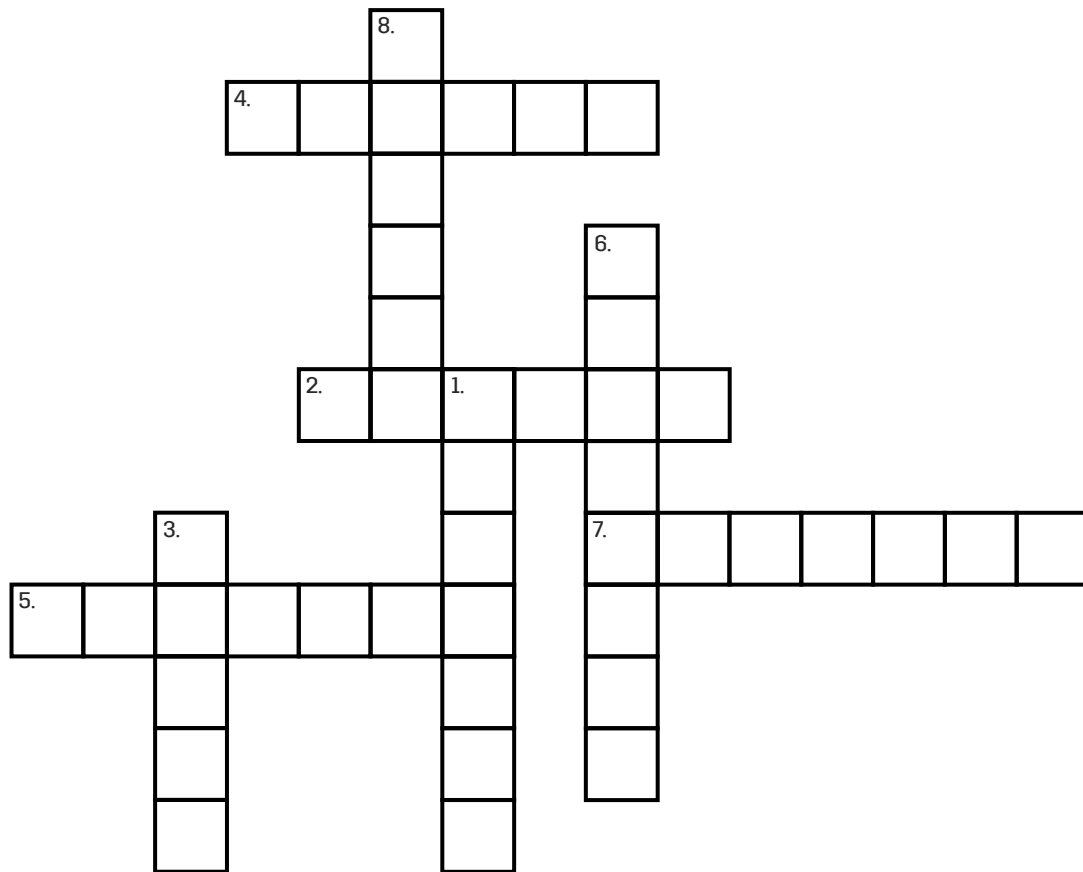
Remember - words can be printed forwards or backwards!

|   |   |   |   |   |   |   |   |   |   |   |   |   |   |
|---|---|---|---|---|---|---|---|---|---|---|---|---|---|
| A | P | D | P | U | S | A | D | I | D | A | B | S | N |
| I | N | E | E | L | N | L | U | L | M | R | T | E | O |
| U | P | P | I | O | A | A | E | C | D | A | S | V | O |
| O | T | O | T | I | T | C | C | U | N | L | E | E | C |
| K | T | T | P | C | L | D | K | Y | D | L | Y | E | C |
| S | O | H | R | E | C | A | L | E | I | O | E | L | L |
| C | N | U | I | T | K | O | R | T | T | C | P | S | A |
| E | I | M | N | R | N | S | P | O | N | S | O | R | S |
| C | P | M | T | L | C | R | E | S | T | E | P | O | S |
| T | S | E | L | A | R | I | M | D | A | A | P | G | I |
| I | A | L | T | S | E | P | I | R | T | S | E | O | C |
| G | O | R | B | M | U | P | D | S | L | R | R | L | Y |
| E | R | E | P | L | I | C | A | R | C | O | S | L | T |
| R | M | E | A | S | L | I | E | L | O | R | A | E | T |

EYEPOPPERS | UMBRO | STRIPES | COLLAR  
ADMIRAL | PRINT | HUMMEL | PLACKET | SPONSOR  
COTTON | SLEEVES | CLASSIC | INVISIBLE  
REPLICA | LOGO | NYLON | CREST

# KIT STORY!

Answer the questions to reveal the history of the football strip.



1. In the earliest days of football, shirts were hand-made by these professional clothesmakers.
2. Until the 1960s, shirts were usually made of this common natural fabric.
3. This English kit company with the double diamond logo was founded in 1924 and is still going strong.
4. In 1953, this international side changed to their famous yellow, green, blue and white kits.
5. In the 1970s, this company produced the first replica kits for Leeds United and England.
6. In 1977, the FA relaxed their rules and allowed clubs to wear these logos on their shirts.
7. Adidas made their first kits for English clubs in the 1970s. They were easily recognisable by these three things on their sleeves.
8. This fast-growing plant is now used by PlayerLayer to make kits for Forest Green Rovers.

# ODD ONE OUT!

One of these strips is not like the other.  
Pick the odd one out of the four sets of shirts.



# KIT DETECTIVE!

Help the curators write the exhibition labels by discovering the missing facts.



1. We know that this shirt is from around 1900, but we don't know which team wore it. Write the names of three English clubs who wear red and white stripes:

1. \_\_\_\_\_

2. \_\_\_\_\_

3. \_\_\_\_\_



2. This shirt has no club crest, but we know that it was worn by an Italian club who have won more than 20 league titles. But which one?

Answer: \_\_\_\_\_

3. This Liverpool shirt has a poppy on it to mark Remembrance Day. Clubs began this tradition in 2007, but which year was this shirt worn? Visit our website and search our collections to find the answer: [nationalfootballmuseum.com/collections](http://nationalfootballmuseum.com/collections)

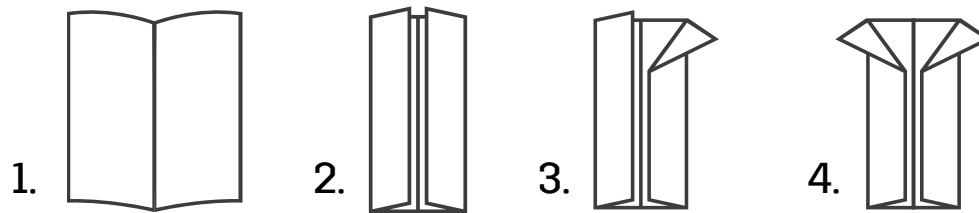
Answer: \_\_\_\_\_





# MAKE YOUR OWN ORIGAMI SHIRT!

1. Tear a pattern sheet from the booklet. Fold it in half down the middle (lengthways).
2. Fold again, this time right side down the middle (again lengthways). Repeat on the other side – this will give you two flaps.
3. Make a diagonal fold in the right side.
4. Then repeat on the left. This should give you a V shape.



5. Flip the paper over so the V you created is on the bottom and facing downwards. Then fold about 2 cm down in a straight-line from the top.
6. Flip the paper over again and fold the right corner towards the centre.
7. Now repeat on the other side. The corners should just about touch in the middle.
8. Bring the bottom of the paper towards the top and slide it under the collar. Hopefully you'll now be able to see your shirt come together. Press down on the base and your mini-shirt is complete, enjoy!

